

CYCLEMAX™

F L O R A L B O U Q U E T

MUGUET FRESH, WATERY,
HINTS OF RIPENED MELON.
GREAT FOR FLORAL BOUQUETS.

IFF

we create unique scent & taste experiences people love



Cyclemax™

Introduction

We are pleased to inform our ingredient customers that the self classification of Cyclemax™ as a reproductive toxicant, category 2 (GHS) was recently removed from the IOFI/IFRA GHS Labeling Manual issued on December 6, 2012. As a result IFF no longer classifies Cyclemax™ as a reproductive toxicant on Safety Data Sheets or drum labels for orders placed after June 2013.

This means that Cyclemax™ can be used replacing materials in the Muguet odor family which remain with the CMR classification.

Cyclemax™ odor profile

Cyclemax™ is very performing especially from neat product and damp laundry. Influenced by dose level Cyclemax™ can be used to impart unique aquatic white floral notes to damp laundry or can be used to develop a green aldehydic Muguet character which is powerful and diffusive. The traditional Lily of the Valley odor profile of Cyclemax™ is similar to Lilial as is the molecular structure. Therefore it is very useful in developing bases to replace materials like Lilial.



Cyclemax™



How to use Cyclemax™

The odor profile of Cyclemax™ blends very well with Kharismal® Super, Helional™ and Melafleur to name a few. Used in combination with Myrac Aldehyde and Floral Super the fresh facets of Cyclemax™ are emphasized increasing the top note performance. For aggressive bases such as powder detergent with bleach a combination of Cyclemax™, Meijiff™ and Muguesia should be considered.

Performance & Stability

PRODUCT	PERFORMANCE	STABILITY
Fine Fragrance	Very Good	Very Good
Acid Cleaner	Moderate	Moderate
Liquid Detergent	Very Good	Good
Powder Detergent	Good	Moderate
Fabric Conditioner	Very Good	Good
AP Deo	Good	Moderate
Shampoo	Very Good	Good
Soap	Good	Moderate
Candles	Moderate	Good
Bleach	Poor	Poor

CYCLEMAX™

3-(p-cumenyl)propionaldehyde

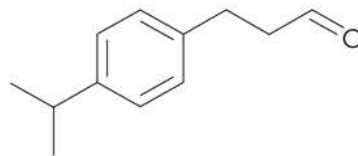
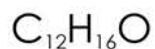


FLORAL

Floral

Fresh

Muguet



IPC NUMBER 33280

MOLECULAR WEIGHT

176.12

OLFACTORY DESCRIPTION

Fresh, floral, muguet with a fruity melon nuance.

USE LEVEL

Up to 20%

RECOMMENDED USES

Fine fragrance, personal care, fabric care, home care

VISUAL DESCRIPTION

Colorless to pale yellow liquid

GC SUMMARY

Min 96%

ScentEmotions™

Air

Contrasted

Intimate

Exhilarating

High Tech

Nature

Opulent

Mystical

Primitive

Tasty

IFF

CAS NUMBER

7775-00-0

EINECS/ELINCS NUMBER

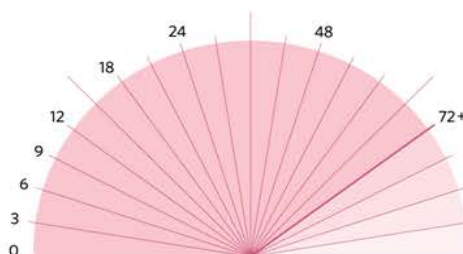
231-885-3

LOG P

3.37

FLASHPOINT

112°C



SUBSTANTIVITY >72 hours